

Borough Council of
**King's Lynn &
West Norfolk**



Regeneration and Development Panel

Agenda

Tuesday, 20th February, 2024
at 6.00 pm

in the

Council Chamber, Town Hall, King's Lynn
and available for the public to view on

[WestNorfolkBC on You Tube](#)



King's Court, Chapel Street, King's Lynn, Norfolk, PE30 1EX
Telephone: 01553 616200

Monday 12th February 2024

Dear Member

Regeneration and Development Panel

You are invited to attend a meeting of the above-mentioned Panel which will be held on **Tuesday, 20th February, 2024 at 6.00 pm** in the **Council Chamber, Town Hall, Saturday Market Place, King's Lynn PE30 5DQ** to discuss the business shown below.

Yours sincerely

Chief Executive

AGENDA

1. Apologies for absence

To receive any apologies for absence.

2. Minutes (Pages 5 - 10)

To approve the minutes of the previous meeting.

3. Declarations of Interest (Page 11)

Please indicate if there are any interests which should be declared. A declaration of interest should indicate the nature of the interest (if not already declared on the Register of Interests) and the agenda item to which it relates. If a disclosable pecuniary interest is declared, the Member should withdraw from the room whilst the matter is discussed.

Those declarations apply to all Members present, whether the Member is part of the meeting, attending to speak as a local Member on an item or simply observing the meeting from the public seating area.

4. Urgent Business

To consider any business which, by reason of special circumstances, the Chair proposes to accept as urgent under Section 100(b)(4)(b) of the Local Government Act, 1972.

5. Members Present Pursuant to Standing Order 34

Members wishing to speak pursuant to Standing Order 34 should inform the Chair of their intention to do so and what items they wish to be heard before a decision on that item is taken.

6. Chair's Correspondence

If any.

7. Economic Strategy for West Norfolk - TO FOLLOW

8. Norfolk Wide Local Cycling and Walking Infrastructure Plan (Pages 12 - 25)

9. Chairs Discussion Item - Motorhome/Caravan Park in King's Lynn (Verbal Report)

10. Work Programme and Forward Decision List (Pages 26 - 32)

11. Date of the next meeting

To note that the next meeting of the Regeneration & Development Panel is scheduled to take place on 16th April 2024 at 6.00pm in the Council Chamber, Town Hall.

To:

Regeneration and Development Panel: P Beal, S Bearshaw (Chair), R Blunt, F Bone, A Bubb, Mrs J Collingham, R Colwell, C J Crofts, A Dickinson and D Heneghan (Vice-Chair)

Portfolio Holders:

Councillor Moriarty – Portfolio Holder for Regeneration and Development for Agenda Item 9

Councillor Beales – Portfolio Holder for Business for Agenda Item 7

Councillor de Whalley – Portfolio Holder for Climate Change and Biodiversity for Agenda Item 8

Officers

Duncan Hall – Assistant Director

Jemma Curtis – Regeneration Programmes Manager

Martin Chisholm – Assistant Director

By Invitation:

Representatives from Metro Dynamics

Representatives from Norfolk County Council

BOROUGH COUNCIL OF KING'S LYNN & WEST NORFOLK**REGENERATION AND DEVELOPMENT PANEL**

Minutes from the Meeting of the Regeneration and Development Panel held on Tuesday, 30th January, 2024 at 6.00 pm in the Council Chamber, Town Hall, Saturday Market Place, King's Lynn PE30 5DQ

PRESENT: Councillors Bearshaw (Chair), Beal, Bone, Bubb, Collingham, Colwell and Crofts.

PORTFOLIO HOLDERS:

Councillor Beales – Portfolio Holder for Business

Councillor Moriarty – Portfolio Holder for Regeneration and Development

Councillor Rust – Portfolio Holder for People and Communities

OFFICERS:

Duncan Hall – Assistant Director

David Ousby – Assistant Director

Nikki Patton – Housing Services Manager

PRESENT UNDER STANDING ORDER 34: Councillor Heneghan (remotely and Councillor Kemp.

RD75: APPOINTMENT OF VICE CHAIR FOR THE MEETING

RESOLVED: Councillor Bone was appointed Vice Chair for the meeting.

RD76: APOLOGIES FOR ABSENCE

Apologies for absence were received from Councillors Blunt, Dickinson and Heneghan.

RD77: MINUTES

RESOLVED: The minutes from the previous meeting were agreed as a correct record and signed by the Chair.

RD78: DECLARATIONS OF INTEREST

Assistant Director Duncan Hall declared an interest in RD87: Acquisition of Homes as he was a Director of West Norfolk Housing Company.

RD79: URGENT BUSINESS

There was none.

RD80: **MEMBERS PRESENT PURSUANT TO STANDING ORDER 34**

Councillors Heneghan (remotely) and Kemp.

RD81: **CHAIR'S CORRESPONDENCE**

There was none.

RD82: **CABINET REPORT - LYNNSPORT 1 (VALENTINE PARK) DEVELOPMENT UPDATE**

[Click here to view the recording of this item on You Tube.](#)

The Assistant Director presented the report which provided an update on the Lynnsport 1 development and sought final approval to proceed with the scheme. A copy of the presentation is attached.

The Chair thanked the Assistant Director for the report and invited questions and comments from the Panel, as summarised below.

Councillor Crofts commented that the Internal Drainage Board Easement Strip was wider than he expected, and the Assistant Director explained that this was at the request of the Internal Drainage Board.

In response to further questions from Councillor Crofts relating to air source heat pumps, the Assistant Director explained that technology had improved, and they required the same amount of maintenance as a gas boiler. He explained that retrospective installations could be problematic, but they were generally fine in new builds. He explained that modern air source heat points were virtually silent.

Councillor Colwell asked about piling foundations and the impact on residents and the Assistant Director explained that a different type of piling would be carried out which was quieter. Inspections and reports would also be carried out as required.

In response to a further question from Councillor Colwell, the Assistant Director explained that a traffic management plan would be adopted for the site and the plan for Marsh Lane would also be implemented at the same time. Councillor Colwell asked if the Panel should consider a recommendation to Cabinet for a second raised table in the area and additional traffic calming measures. The Assistant Director explained that a request could be made to Norfolk County Council Highways.

Councillor Collingham asked who would be responsible for ensuring the site was complete and the Assistant Director explained that the Council had a Clerk of Works who regularly inspected to ensure all was

up to standard and it would be up to the Council, as the developer, to ensure that the site was complete and that the necessary adoptions were in place.

In response to a question from Councillor Collingham it was explained that the proposed large windows may have to be reduced in size to comply with Building Regulations.

Councillor Bone asked what would happen to excess energy generated through the solar panels, would there be battery storage opportunities, and who would get the revenue from any energy transferred back into the national grid. The Assistant Director explained that battery storage had not been considered at this stage and storage of energy would depend on regulations.

In response to questions from Councillor Bubb it was explained that there was a connecting route through the site, and areas which were not adopted would be subject to a management agreement which transferred to property owners who would pay a company for maintenance.

The Assistant Director explained that work was carried out with schools on street naming.

Councillor Colwell referred to flood risk concerns from surface water and it was explained that an additional pumping station had been provided which was of benefit to the wider area.

Councillor Kemp addressed the Panel under Standing Order 34. She was concerned about unadopted drainage and who would be responsible for maintenance. The Assistant Director confirmed that all drainage on site would be adopted, and all construction had to be carried out to an adoptable standard. Drainage would be maintained by a company to approved standards and the cost would be recovered through property water bills.

The Panel discussed Planning Policy and it was suggested that a briefing be presented to a future meeting of the Panel.

The Panel discussed a potential additional recommendation to Cabinet about ensuring that the development was completed, up to standard and had adequate calming measures, but generally felt that this was already covered by the fact that the Council was the developer and had a duty to provide a quality standard of properties. Highways issues would also be considered via the Norfolk County Council Highways adoption process.

The Portfolio Holder for Business, Councillor Beales thanked the Panel for their useful comments and explained that the Council's ambition was to deliver quality housing development sites and the Council have been able to bring forward sites that the private sector may not due to

constraints such as water management and drainage. He explained that the issues raised by the Panel relating to a second raised table and traffic calming would be discussed with Norfolk County Council Highways as required.

Councillor Beales also referred to the use of air source heat pumps and reminded Members that in ten years or so gas boilers would not be able to be fitted, so the Council, as developer, had to be responsible in future proofing the site and providing the most energy efficient measures.

Councillor Beales also explained that he would seek clarification on the impact unadopted areas would have on affordable homes and ensure that an update was available in readiness for the Cabinet meeting.

The Panel agreed to move into exempt session to consider the exempt information contained within the report.

RD83: WORK PROGRAMME AND FORWARD DECISION LIST

[Click here to view the recording of this item on You Tube.](#)

It was suggested that a briefing on Planning Policy be presented to a future meeting of the Panel.

RESOLVED: The Panel's Work Programme was noted.

RD84: DATE OF THE NEXT MEETING

The next meeting of the Regeneration and Development Panel would be held on Tuesday 20th February 2024 at 6.00pm in the Town Hall.

RD85: EXCLUSION OF PRESS AND PUBLIC

[Click here to view the recording of this item on You Tube.](#)

RESOLVED: That under Section 100(4)(A) of the Local Government Act, 1972, the press and public be excluded from the meeting for the following item of business on the grounds that it involves the likely disclosure of exempt information as defined in paragraph 3 of Part 1 of Schedule 12A to the Act.

RD86: EXEMPT - APPENDIX 2 - LYNNSPORT 1 CABINET REPORT

The Panel discussed the Exempt Appendix as contained in the report which related to the revenue and capital budget and costs.

RESOLVED: That the Regeneration and Development Panel support the recommendations to Cabinet, as set out below.

Cabinet resolves:

1. To proceed with the Lynnsport 1 development to deliver 96 homes with Lovell Partnership Limited (LPL) under the Major Housing Partnership Development Management Agreement (30th April 2015).
2. That the Executive Director (Place), in consultation with the Portfolio Holder for Business and Monitoring Officer be given delegated authority to approve the final terms of a Project Partnering Contract (PPC) 2000 with LPL to deliver this project.
3. That the Council shall dispose of the properties in accordance with the tenure mix as set out in Table 2 of the report. In line with the corporate strategy.
4. Pending the transfers referred to at resolution 3 above, the affordable and private rented tenures may be leased to WNHC and WNPL respectively.

Recommendation to Full Council.

5. To approve the Capital budget estimate as detailed in section 5 and appendix 2 of the report.

RD87: EXEMPT - CABINET REPORT - ACQUISITION OF HOMES

The Housing Services Manager presented the report as included in the Agenda.

Assistant Director Duncan Hall declared an interest in this item as a Director of West Norfolk Housing Company.

The Panel was advised that an amended version of the report had been circulated to the Panel and the Housing Strategy Manager provided information on the amendments. She also explained that there was an error in the recommendations and that the reference to Executive Director (Regeneration, Housing and Place), should be amended to Executive Director (Place).

The Housing Services Manager responded to questions relating to the sale price of the homes, interior specifics, to which it was confirmed that the interiors such as floors would be appropriate and specific for purpose, that the properties would be mainly used for families and would be subject to a management agreement.

The Portfolio Holder for People and Communities, Councillor Rust commented that she supported the proposals to assist in meeting the Councils housing needs for temporary accommodation and reducing the use of bed and breakfast accommodation.

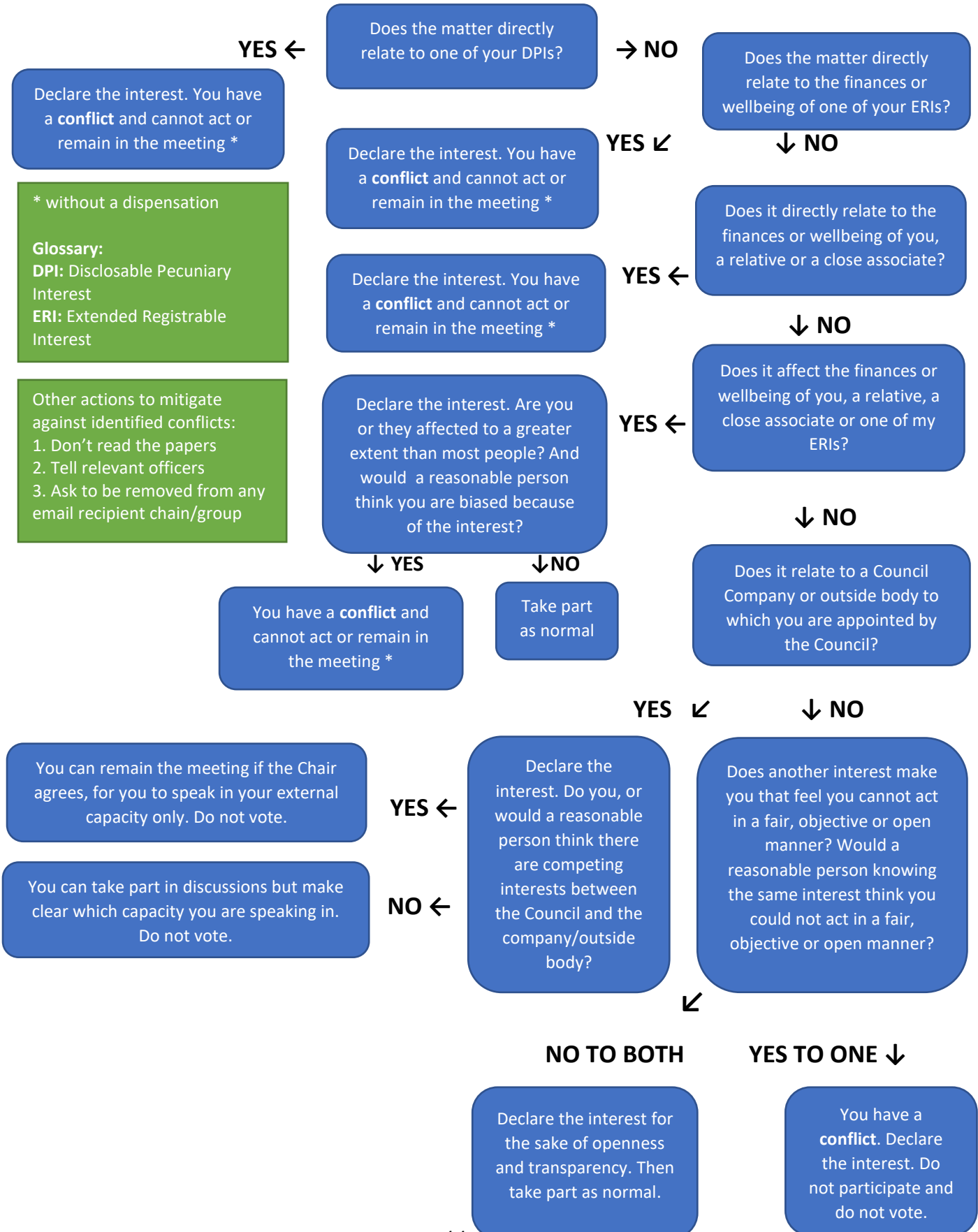
RESOLVED: That the Regeneration and Development Panel supported the Cabinet recommendations as set out in the amended report.

The meeting closed at 7.30 pm

DECLARING AN INTEREST AND MANAGING ANY CONFLICTS FLOWCHART



START



Countywide Local Cycling and Walking Infrastructure Plan

Update for:

12

Borough Council of King's Lynn & West Norfolk

Regeneration and Development Panel

20th February 2024

Context

- Norfolk County Council (NCC) are creating a **Local Cycling and Walking Infrastructure Plan (LCWIP) for Norfolk**.
- The purpose of the 'Countywide LCWIP' is to help identify and prioritise **unfunded short, medium and long-term** active travel infrastructure schemes which will enable increased levels of cycling, walking and wheeling (using a wheelchair or mobility aid) across the county.
- LCWIP's support the ambition set out in the emerging County Council **Walking, Wheeling and Cycling Strategy**, as well as the Government's ambition for 50% of all journeys in towns and cities to be walked or cycled by 2030 and align with local plans (LTP4) and strategies.
- Increased levels of cycling and walking can provide many benefits including improving **air quality, reducing congestion, addressing inequalities, improving physical and mental health, and mitigating climate change**.
- ↻ The Countywide LCWIP builds on plans already created for **King's Lynn, Greater Norwich and Great Yarmouth**.
- NCC has identified potential active travel network improvements which enable connectivity within **20 towns** across the county and link people with public transport, key services, employment areas, greenspace and places of education and training.
- The LCWIP will also include schemes which increase **connectivity between towns and rural communities**, giving people and visitors access to greenspace as well as linking people with central services, places of education and employment.
- The purpose of this briefing is to share an overview of the Countywide LCWIP which is in the forward plan for the Norfolk County Council Infrastructure & Development Select Committee and Cabinet for **adoption in April 2024**

Key outputs of the Countywide LCWIP

The Countywide LCWIP will provide the following key outputs:

- A **network plan** for walking, wheeling and cycling and identification of the priority cycling routes and walking zones in the study area.
- A **prioritised programme of infrastructure improvements** to be delivered in the short, medium and long term.
- A **report** which sets out the underlying analysis carried out and provides a narrative which supports the identified improvements and growing network.

14

The LCWIP aligns with the Department for Transport Gear Change paper and the Cycle Infrastructure Design Guidance.



DfT Gear Change paper

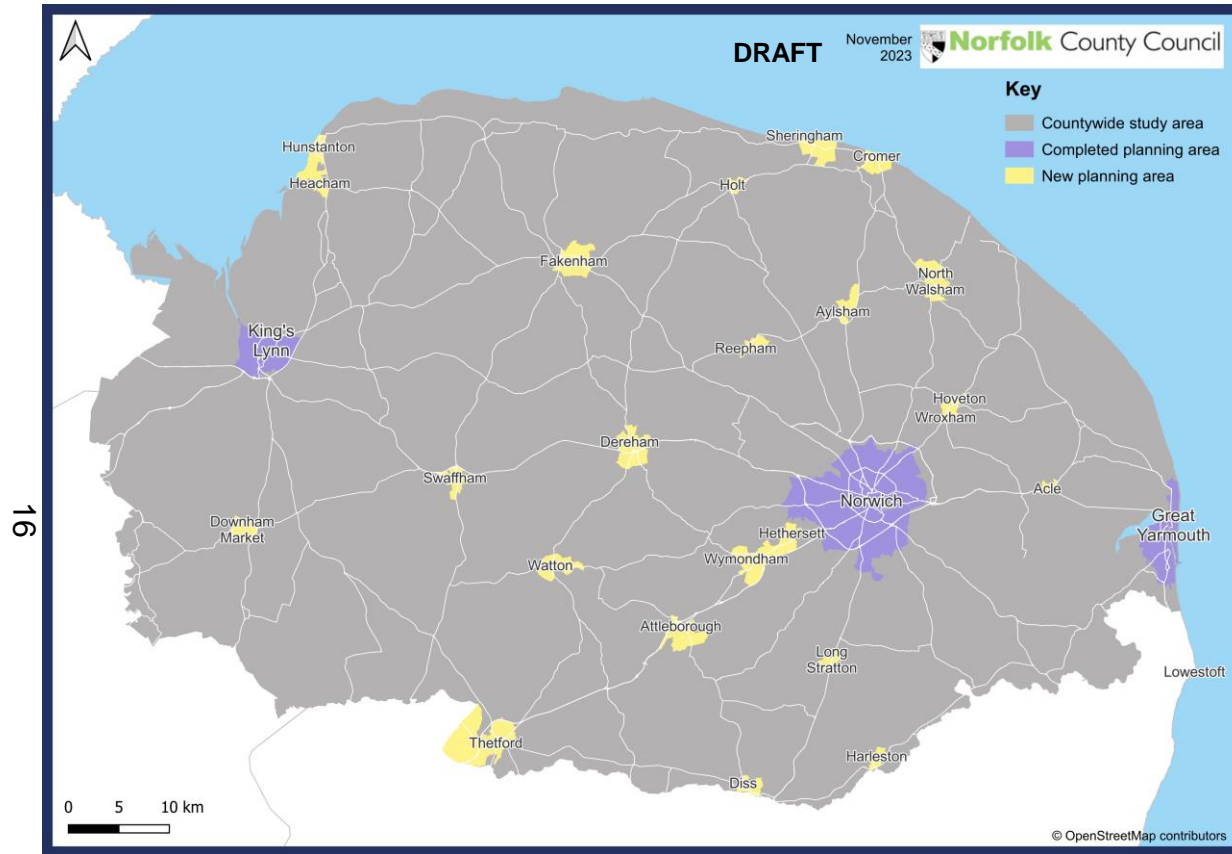


DfT Cycle Infrastructure Design Guidance (LTN 1/20)

LCWIP development stages

Stage	Title	Details	How this was completed?
1	Determining Scope	Establish the geographical extent of the LCWIP, and arrangements for governing and preparing the plan.	The geographical extent and scope of the plan was jointly agreed between Norfolk County Council and District Councils.
2	Gathering Information	Identify existing patterns of walking and cycling and potential new journeys. Review existing conditions and identify barriers to cycling and walking. Review related transport and land use policies and programmes.	Existing network conditions and barriers to cycling and walking were identified by reviewing local plans and policies to identify potential network schemes. This included a review of adopted Neighbourhood Plans and key strategic transport, environment and public health policy documents. An online survey, released in early 2022, was also used to identify key barriers to active travel and site visits were conducted by Norfolk County Council Project Officers to access and validate identified active travel networks.
3	Network Planning for Cycling	Identify origin and destination points and cycle flows. Convert flows into a network of routes and determine the type of improvements required.	A series of activities were completed to create a cycle network plan including a review of key attractors within towns and market towns, cycle propensity modelling and a review of existing schemes identified through funding initiatives.
4	Network Planning for Walking	Identify key trip generators, core Walking Zones and routes, audit existing provision and determine the type of improvements required.	A series of activities were completed to create a walking network plan including a review of key attractors within towns and market towns and a review of existing schemes identified through funding initiatives.
5	Prioritising Improvements	Prioritise improvements to develop a phased programme for future investment.	A programme of public engagement was undertaken for 8 weeks in 2023 to validate, prioritise and refine the indicative active travel priority networks proposals in the first draft of the Countywide Cycling and Walking Infrastructure Plan.
6	Integration and Application	Integrate outputs into local planning and transport policies, strategies, and delivery plans.	Next Steps: Working closely with Members, Active Travel England, District Councils and key stakeholders to prioritise schemes and seek funding opportunities to enable the delivery of infrastructure changes which provide the best outcomes for the people of Norfolk and the environment.

Study area



Map 1: Countywide LCWIP Study Area

- The Countywide LCWIP contains proposals for potential active travel networks in **20 towns** across the county.
- The design of each network is intended to enable people to consider walking, wheeling and cycling as a mode of transport, especially when making short journeys around town.
- Each of the proposed networks consists of priority and secondary routes which connect people with places of **employment, education, training, central services, public transport and greenspace**, both now and in the future.
- Walking Zone study areas have also been identified for each of the towns. These are areas within which the priority for schemes will be to enable people to easily walk or wheel at any time to access key services and areas of employment, education and training.

Countywide LCWIP policy context and alignment

Planning Policy

District and Borough Council Plans and Strategies

Town plans and neighbourhood plans

Norfolk Access Improvement Plan (2019 – 2029)

Norfolk Strategic Infrastructure Delivery Plan (2020)

Transport Policy

DfT Gear Change policy paper and LTN 1/20

Norfolk Local Transport Plan 4 (2021-2036)

Bus Service Improvement Plan (2021)

Norfolk Cycling & Walking Strategy (emerging)

Transport decarbonisation plan (2021)

Adopted Local Cycling and Walking Infrastructure Plans

Environment & Air Quality Policy

HM Government 25 Year Environment Plan

Norfolk County Council Environment Policy (2019)

Norfolk County Council Climate Strategy

The Climate Change Act Revision (2019)

Clean Air Strategy (2019)

The Paris Agreement (2015)

Public Health Policy

Joint Health and Wellbeing Strategy (2018-2022)

Public Health England: Working Together to Promote Active Travel (2016).

Covid 19 recovery plan

Public engagement

Cycling & walking attitudinal survey: April & May 2022

Safety: lower traffic speeds and well-maintained pavements would encourage active travel.

Dedicated cycle lanes: 59% strongly support creation of dedicated cycle lanes.

Cycle parking: 51% would like to see improved secure cycle parking.

Route awareness: More awareness of cycling & walking routes.

Mapping data: Collection of data on potential cycling and walking routes in Norfolk.

1,643
Online
survey
completions

Priority network survey: May, June & July 2023

Town active travel networks: Prioritisation of priority routes within 20 towns and market towns and validation of Walking Zones.

Wider connectivity routes: Prioritisation of network routes within the National Cycle Network, the Norfolk Trails Network as well as potential new wider connectivity routes.

Network support schemes: Feedback on schemes to enable active travel including public cycle hire, cycle parking, wayfinding, e-cargo bikes and Travel Hubs.

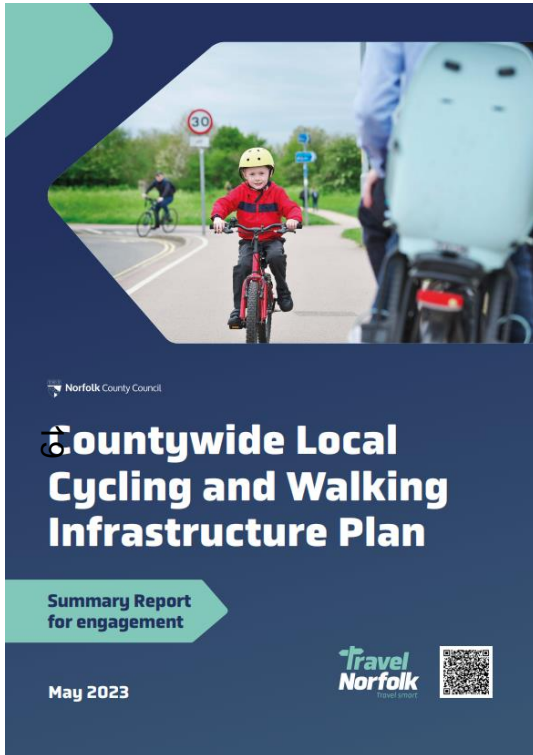
1,025
Online
survey
completions

8 public engagement events: May & June 2023

Date	Town	Number of conversations
Monday 22nd May	Sheringham	38
Tuesday 23rd May	Long Stratton	22
Wednesday 24th May	Hunstanton	29
Thursday 25th May	Dereham	30
Tuesday 30th May	Thetford	49
Wednesday 31st May	Wymondham	44
Friday 2nd June	Wroxham & Hoveton	40+
Wednesday 28 June	Royal Norfolk Show	66
Thursday 29 June	Royal Norfolk Show	44



Countywide LCWIP Main Report



8. Active Travel network proposals for towns in Norfolk

Acle

i. Introduction

Acle is a market town situated between Norwich and Great Yarmouth, with a population of 2,788 in 2021. The town has a particularly high proportion of residents aged 65 or over who in the same year made up 26% of the population¹.

Acle has around 1,300 houses, a figure which is set to grow with an allocation for the development of 120-150 houses at the Mill Lane site and the Springfield Road site in the east. This is expected to boost the number of residents and economically active population of Acle, which stood at 52% in 2021¹.

In 2021, driving by car or van was the preferred method of travel to work for residents aged 16+ at 57%. A further 5.5% of residents travelled by foot, 3.3% by bus or train and 1% cycled. Other methods accounted for 5.3% of journeys².

Acle train station is located in the south of the town and is accessible via the road and by foot. Weavers' Way is a walking, cycling and horse-riding Trail running north to south and is located a 5-minute walk east from the town centre, providing direct access to greenspace.

ii. Active travel network

The priority active travel routes in Acle aim to improve connectivity by linking new and existing residential areas with public transport, central employment areas and greenspace via Weavers' Way. Secondary routes also enhance connectivity by linking residential areas in Acle with local schools and places of employment and recreation. The network also embeds policies and proposals contained within the Acle Neighbourhood Plan.

The Acle Walking Zone study area includes the central employment area in the town centre and aligns with the Acle Neighbourhood Plan 'Village Centre Development area' including The Street, Old Road and Bridewell Lane. The next step is to conduct feasibility studies and walking route assessments within this area to identify schemes to improve walking and wheeling connectivity.

Acle LCWIP - Active Travel Network (DRAFT)

iii. Summary of priority active travel routes and schemes

Route Number	Route	Route Description
Route 1 (Red)	South Walsham Road to Old Road	A 1.3km cycling and walking route linking new and existing residential areas in the northwest with Acle Academy and key services and employment areas in the town centre via South Walsham Road.
Route 2 (Blue)	Mill Lane to town centre	A 1.1km east to west linear cycling and walking route linking new and existing residential areas with the town centre, employment areas via Mill Lane and connecting to Jubilee Wood. This route could also include a link to Acle Academy.
Route 3 (Green)	Glover Road to town centre via train station	A 1.3km route linking new housing allocations on Glover Road with the train station as well as providing a direct link between the train station and town centre.
Route 4 (Yellow)	Acle Bridge to town centre	A 2.2km cycling and walking route linking the town centre with Acle Bridge and Stokesby Road. This route would include additional walking and cycling crossing points over the

		AT084 enabling improved access to Weavers' Way.
Route 5 (Orange)	Mill Lane to Norwich Road	A 0.8km direct cycling and walking link between new housing allocations on Glover Road, places of education and the town centre.

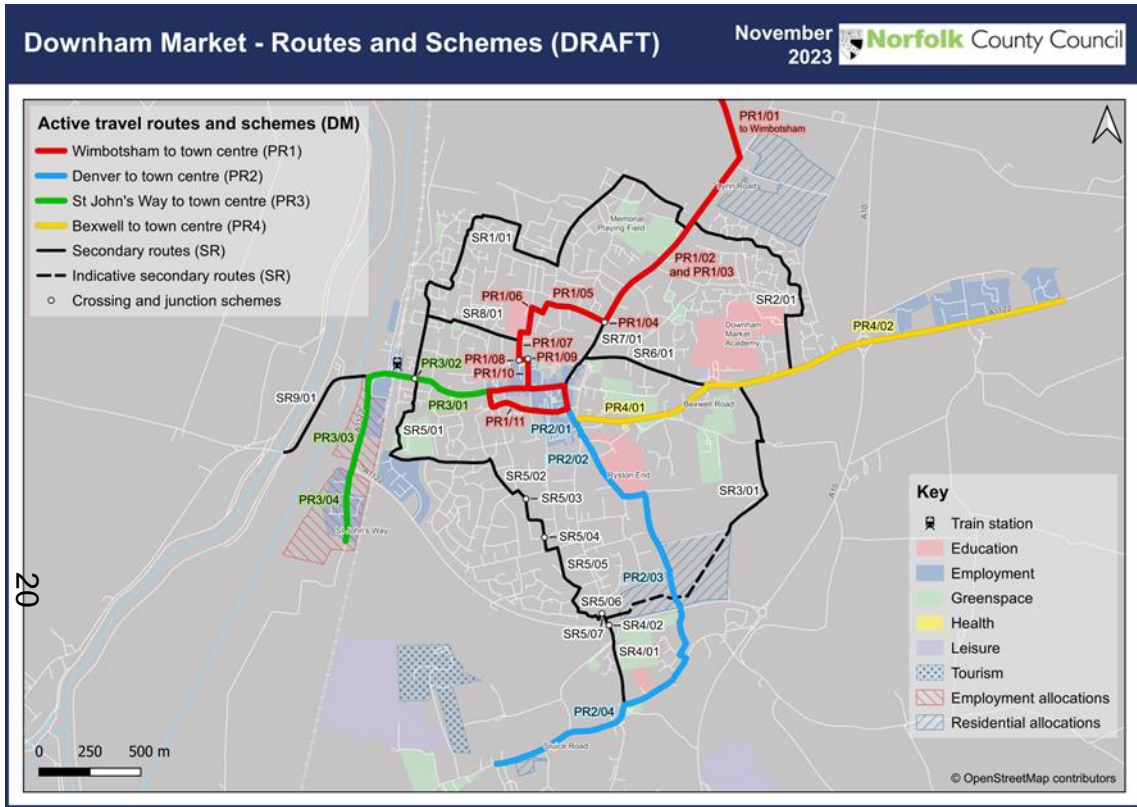
Further information for specific schemes along each of the primary and secondary routes can be found in Annex A.

Acle LCWIP - Routes and Schemes (DRAFT)

Draft Countywide LCWIP Report example extract

- Network routes outlined within the LCWIP Engagement Report have been updated to reflect feedback received from the public engagement.
- Annex A supports the main report and also contains the scheme maps and the list of schemes for each of the 20 towns and wider connectivity routes.

Downham Market: Annex A - scheme map and list



Map 2: Draft Active Scheme map

Schemes are unfunded and set out the next steps and potential active travel barriers to be addressed as part of any initial **feasibility study or assessment stage**.

All schemes are in the early stages of development and are **subject to full public consultation**. The **scale and pace** of delivery is subject to funding.

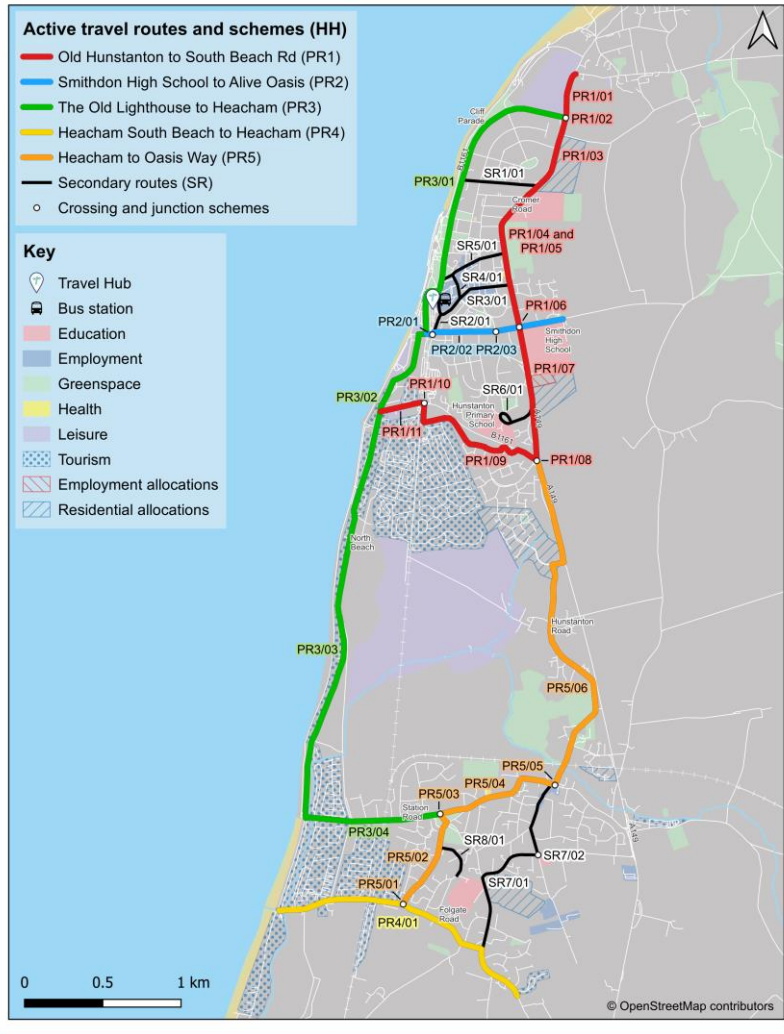


DOWNHAM MARKET										
Active Travel Infrastructure Scheme List and Network Map (DRAFT)										DRAFT
Reference	Route	Route Type	Road Name	Settlement	Source	Description	Type	Length (m)	Timescale (<3, <5, >5 years)	Next Steps
DM/PR1/01	DM Route 1 (Red)	Primary	Low Road (Church Rd to Lynn Rd)	Downham Market	Countywide Local Cycling and Walking Infrastructure Plan	Feasibility study required to identify options for providing priority pedestrian and cycling connectivity along Low Road and enabling a right turn onto Lynn Road.	Cycling, walking and wheeling	1000m	Medium <5 years	Scheme feasibility Year 1 Detailed design Year 2
DM/PR1/02	DM Route 1 (Red)	Primary	Lynn Road (Low Rd to Clackclose Rd)	Downham Market	Countywide Local Cycling and Walking Infrastructure Plan & Network Improvement Strategy	Feasibility study and schemes to enable continuous safe cycling, walking and wheeling connectivity along Lynn Road (B1507) between the junction with Low Road and Clackclose Road. Attention to traffic speeds, pavement widths and conditions as well as providing priority at side road crossings. (Lavender Drive, The Firs, Retreat Estate junction, Crivay Avenue and Cook Drive).	Cycling, walking and wheeling	1050m	Medium <5 years	Scheme feasibility Year 1 Detailed design Year 2
DM/PR1/03	DM Route 1 (Red)	Primary	Lynn Road (Low Rd to Clackclose Rd)	Downham Market	Countywide Local Cycling and Walking Infrastructure Plan	Feasibility study and schemes to enable walking and wheeling crossing movements over Lynn Road between Low Road and Clackclose Road at crossing points near key destinations including Downham Nursery School, Downham FC and Memorial Park.	Walking and wheeling	15m	Medium <5 years	Crossing Assessment Year 1 Detailed design Year 2
DM/PR1/04	DM Route 1 (Red)	Primary	Lynn Road and Clackclose Road junction	Downham Market	Priority scheme within Network Improvement Strategy	Feasibility study and schemes to enable cycling, walking and wheeling connectivity at the junction of Lynn Road and Clackclose Road. Scheme to enable a right hand turn for people cycling and turning into Clackclose Road Network Improvement Strategy: Tighten the Lynn Road (B1507)/Clackclose Road junction and improve the right turn facilities from Lynn Road to Cook Close - this could be in form of a great island or mini-roundabout. A mini-roundabout would also serve as a traffic calming measure.	Cycling, walking and wheeling	20m	Medium <5 years	Junction Assessment Year 1 Detailed design Year 2
DM/PR1/05	DM Route 1 (Red)	Primary	Clackclose Road, Wimbotsham Road and Nursey Road	Downham Market	Countywide Local Cycling and Walking Infrastructure Plan	Scheme to provide suitable high-quality continuous safe cycling, walking and wheeling connectivity on National Cycle Network Route 11 along Clackclose Road (starting at the junction with Lynn Road), along Wimbotsham Road and finishing at the nursery school at the end of Nursey Road.	Cycling, walking and wheeling	400m	Medium <5 years	Scheme feasibility Year 1 Detailed design Year 2
DM/PR1/06	DM Route 1 (Red)	Primary	Willow Road and Wesley Close	Downham Market	Countywide Local Cycling and Walking Infrastructure Plan	Scheme to remove all access control points and provide LTN1120 compliant access control points suitable for people cycling, walking and wheeling along the shared-use path starting at Willow Road, crossing Beach Road and Nursery Road and ending at Wesley Close.	Cycling, walking and wheeling	400m	Medium <5 years	Scheme feasibility Year 1 Detailed design Year 2
DM/PR1/07	DM Route 1 (Red)	Primary	Snap Lane (NCN Route 11 section of the jct with the shared-use path on Wesley Cl and Paradise Rd)	Downham Market	Countywide Local Cycling and Walking Infrastructure Plan	Scheme to provide high-quality continuous safe cycling, walking and wheeling connectivity along the National Cycle Network Route 11 section of Snap Lane between the junction with the shared-use path on Wesley Close and Paradise Road.	Cycling, walking and wheeling	95m	Medium <5 years	Scheme feasibility Year 1 Detailed design Year 2
DM/PR1/08	DM Route 1 (Red)	Primary	Paradise Road pedestrian crossing point	Downham Market	Priority scheme within Network Improvement Strategy	A new zebra crossing on Paradise Road next to the Clackclose Pre-School and the Downham Market Health Centre.	Cycling, walking and wheeling	10m	Medium <5 years	Crossing Assessment Year 1 Detailed design Year 2
DM/PR1/09	DM Route 1 (Red)	Primary	Paradise Road junction with Morrisons supermarket	Downham Market	Countywide Local Cycling and Walking Infrastructure Plan	Scheme to provide high-quality continuous safe cycling, walking and wheeling connectivity at the junction with Morrisons.	Cycling, walking and wheeling	20m	Medium <5 years	Junction Assessment Year 1 Detailed design Year 2
DM/PR1/10	DM Route 1 (Red)	Primary	Morrisons supermarket car park NCN Route 11 between Paradise Road and Bridge Street	Downham Market	Countywide Local Cycling and Walking Infrastructure Plan	Scheme to provide high-quality continuous safe cycling, walking and wheeling connectivity along National Cycle Network Route 11 at Morrisons between Paradise Road and Bridge Street.	Cycling, walking and wheeling	145m	Medium <5 years	Scheme feasibility Year 1 Detailed design Year 2
DM/PR1/11	DM Route 1 (Red)	Primary	Bridge Street, High Street and Priory Road	Downham Market	Countywide Local Cycling and Walking Infrastructure Plan & Network Improvement Strategy	Feasibility study and schemes to enable cycling along Bridge Street, High Street and Priory Road one-way system. Network Improvement Strategy: Providing a contraflow cycle lane at the one-way section of Priory Road between Railway Road and Trafalgar Road and changing the priority at the Priory Road/Trafalgar Road junction to create a safer environment for cyclists.	Cycling, walking and wheeling	950m	Medium <5 years	Scheme feasibility Year 1 Detailed design Year 2
DM/PR2/01	DM Route 2 (Blue)	Primary	London Road (jct Priory Rd to jct Ryston End)	Downham Market	Countywide Local Cycling and Walking Infrastructure Plan	Feasibility study to identify high-quality continuous safe cycling, walking and wheeling connectivity along London Road between Priory Road and Ryston End.	Cycling, walking and wheeling	155m	Medium <5 years	Scheme feasibility Year 1 Detailed design Year 2
DM/PR2/02	DM Route 2 (Blue)	Primary	Ryston End (NCN Route 11 section)	Downham Market	Countywide Local Cycling and Walking Infrastructure Plan	Scheme to provide suitable high-quality continuous safe cycling, walking and wheeling connectivity along National Cycle Network Route 11 route on Ryston End, starting at the junction with London Road and ending at the junction with Nightingale Lane.	Cycling, walking and wheeling	465m	Medium <5 years	Scheme feasibility Year 1 Detailed design Year 2
DM/PR2/03	DM Route 2 (Blue)	Primary	Nightingale Lane (jct Ryston End to jct Nightingale Close)	Downham Market	Countywide Local Cycling and Walking Infrastructure Plan	Scheme to deliver safe walking, cycling and wheeling conditions using a semi-bonded surface along Nightingale Lane. Part of this route crosses a bridge over the A1122 and a section of land north of A1122 is designated for the new housing development.	Cycling, walking and wheeling	835m	Medium <5 years	Scheme feasibility Year 1 Detailed design Year 2
DM/PR2/04	DM Route 2 (Blue)	Primary	Ryston Road (Nightingale (H&K) to Sluce Road (Bradley Cl))	Downham Market	Countywide Local Cycling and Walking Infrastructure Plan	Feasibility study and schemes to enable safe cycling, walking and wheeling along Ryston Road and Sluce Road.	Cycling, walking and wheeling	1120m	Medium <5 years	Scheme feasibility Year 1 Detailed design Year 2
DM/PR3/01	DM Route 3 (Green)	Primary	Railway Road (jct Priory Rd to A1122 roundabout)	Downham Market	Countywide Local Cycling and Walking Infrastructure Plan	Scheme to deliver safe walking, cycling and wheeling connectivity along Station Road from Priory Road to the roundabout on the A1122.	Cycling, walking and wheeling	600m	Medium <5 years	Scheme feasibility Year 1 Detailed design Year 2
DM/PR3/02	DM Route 3 (Green)	Primary	Railway Road and Bennet Street junction	Downham Market	Priority scheme within Network Improvement Strategy	New advanced stop lanes at the Railway Road/Bennet Street signalised junction.	Cycling, walking and wheeling	20m	Medium <5 years	Junction Assessment Year 1 Detailed design Year 2
DM/PR3/03	DM Route 3 (Green)	Primary	A1122 (roundabout on Railway Rd to roundabout on St John's Way)	Downham Market	Countywide Local Cycling and Walking Infrastructure Plan	Feasibility study to identify high-quality continuous safe cycling, walking and wheeling connectivity along the A1122 from and including the roundabout on Station Road and the roundabout on Saint John's Way.	Cycling, walking and wheeling	460m	Medium <5 years	Scheme feasibility Year 1 Detailed design Year 2
DM/PR3/04	DM Route 3 (Green)	Primary	St John's Way	Downham Market	Countywide Local Cycling and Walking Infrastructure Plan	Scheme to deliver safe walking, cycling and wheeling connectivity along Saint John's Way serving existing and proposed business allocations.	Cycling, walking and wheeling	360m	Medium <5 years	Scheme feasibility Year 1 Detailed design Year 2
DM/PR4/01	DM Route 4 (Yellow)	Primary	Howdale Road (London Rd to Bexwell Rd)	Downham Market	Countywide Local Cycling and Walking Infrastructure Plan	Feasibility study to identify high-quality continuous safe cycling, walking and wheeling connectivity along Howdale Road connecting with National Cycle Network Route 11 at London Road and ending at the junction with Bexwell Road.	Cycling, walking and wheeling	715m	Medium <5 years	Scheme feasibility Year 1 Detailed design Year 2
DM/PR4/02	DM Route 4 (Yellow)	Primary	Bexwell Road (jct with Howdale Rd to jct on New Rd)	Downham Market	Countywide Local Cycling and Walking Infrastructure Plan	Feasibility study to identify high-quality continuous safe cycling, walking and wheeling connectivity along Bexwell Road from the junction with Howdale Road crossing the roundabout on the A10 and ending in the area of employment on New Road.	Cycling, walking and wheeling	2300m	Medium <5 years	Scheme feasibility Year 1 Detailed design Year 2
DM/SR1/01	DM Secondary Route 1	Secondary	Bennet Street to Mill Lane	Downham Market	Countywide Local Cycling and Walking Infrastructure Plan &	Feasibility study and schemes to enable cycling, walking and wheeling connectivity between Lynn Road (via Mill Lane) and Railway Road (via Bennet Street). Attention to creating links with existing green infrastructure provision.	Cycling, walking and wheeling	2570m	Medium <5 years	Scheme feasibility Year 1 Detailed design Year 2

Extract from Downham Market Scheme List (Draft)

Hunstanton & Heacham: Annex A - scheme map and list

Hunstanton and Heacham LCWIP - Routes and Schemes (DRAFT) Norfolk County Council November 2023



21

Map 3: Draft Hunstanton and Heacham scheme map

Countywide Local Cycling and Walking Infrastructure Plan (LCWIP) (DRAFT)

HUNSTANTON AND HEACHAM

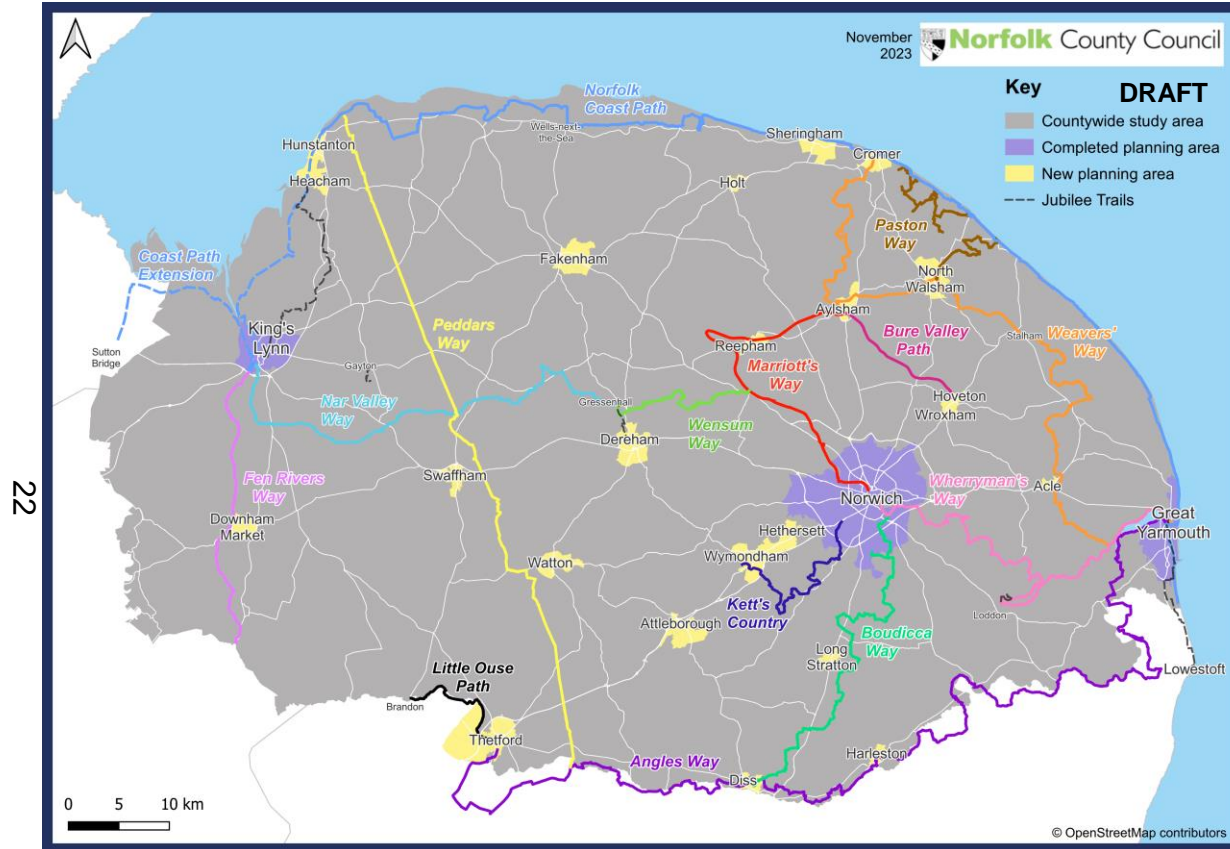
Active Travel Infrastructure Scheme List and Network Map (DRAFT)

DRAFT [Click here to navigate back to the contents page.](#)

Reference	Route	Route Type	Road Name	Settlement	Source	Description	Type	Length (m)	Timescale (<3, <5, 5+ years)	Next Steps
HH PR1/01	HH Route 1 (Red)	Primary	Cromer Road (Lighthouse Ln to Golf Course Rd)	Hunstanton and Heacham	Countywide Local Cycling and Walking Infrastructure Plan	Feasibility study and scheme to extend cycling, walking and wheeling connectivity between Hunstanton and Old Hunstanton along Cromer Road between the junction of Lighthouse Lane and Golf Course Road. A feasibility study and scheme has been identified to extend the current width of the west side pavement to enable safe segregated cycling and walking access.	Cycling, walking and wheeling	306m	Medium <5 years	Scheme feasibility Year 1 Detailed design Year 2
HH PR1/02	HH Route 1 (Red)	Primary	Lighthouse Lane (Junction with Cromer Rd)	Hunstanton and Heacham	Countywide Local Cycling and Walking Infrastructure Plan	Feasibility study and schemes to enable walking and wheeling connectivity over Lighthouse Lane at the junction with Cromer Road. Consideration for a set back raised table to enable priority cycling, walking and wheeling connectivity between any new provision along Cromer Road (HS PR1/01) and the existing shared-use provision along Old Town Way and Cromer Road.	Cycling, walking and wheeling	7m	Medium <5 years	Junction Assessment Year 1 Detailed design Year 2
HH PR1/03	HH Route 1 (Red)	Primary	Old Town Way and Cromer Road (B1161 to Clarence Rd)	Hunstanton and Heacham	Countywide Local Cycling and Walking Infrastructure Plan	Feasibility study and scheme to provide high-quality continuous safe cycling, walking and wheeling connectivity along Old Town Way and Cromer Road between the Lighthouse Lane and Clarence Road junctions.	Cycling, walking and wheeling	484m	Medium <5 years	Scheme feasibility Year 1 Detailed design Year 2
HH PR1/04	HH Route 1 (Red)	Primary	Cromer Road and King's Lynn Road (Clarence Rd to Westgate)	Hunstanton and Heacham	Countywide Local Cycling and Walking Infrastructure Plan	Feasibility study and schemes to provide additional crossing points along Cromer Road and King's Lynn Road at key destinations including Glebe House School & Nursery and King's Lynn & West Norfolk Hunstanton Recreation area.	Walking and wheeling	7m	Medium <5 years	Scheme feasibility Year 1 Detailed design Year 2
HH PR1/05	HH Route 1 (Red)	Primary	Cromer Road and King's Lynn Road (Clarence Rd to Westgate)	Hunstanton and Heacham	Countywide Local Cycling and Walking Infrastructure Plan	Joining with active travel provision highlighted in HHS PR1/03, a feasibility study and scheme to provide continuous and safe cycling, walking and wheeling connectivity along Cromer Road and King's Lynn Road between Clarence Road and Westgate.	Cycling, walking and wheeling	720m	Medium <5 years	Scheme feasibility Year 1 Detailed design Year 2
HH PR1/06	HH Route 1 (Red)	Primary	King's Lynn Road crossing (near Downs Rd and Park Rd)	Hunstanton and Heacham	Countywide Local Cycling and Walking Infrastructure Plan	Feasibility study and scheme to improve accessibility, safety and network connectivity on the existing King's Lynn Road crossing facility near Smithdon High School near the junction of Downs Road and Park Road.	Cycling, walking and wheeling	8m	Medium <5 years	Crossing Assessment Year 1 Detailed design Year 2
HH PR1/07	HH Route 1 (Red)	Primary	King's Lynn Road (Westgate to Oasis Way roundabout turning)	Hunstanton and Heacham	Countywide Local Cycling and Walking Infrastructure Plan	Feasibility study and scheme to enhance existing cycling and walking provision along King's Lynn Road by providing continuous and safe segregated walking and cycling provision between Westgate and the entrance to Oasis Way at the roundabout.	Cycling, walking and wheeling	1150m	Medium <5 years	Scheme feasibility Year 1 Detailed design Year 2
HH PR1/08	HH Route 1 (Red)	Primary	Redgate Hill and Oasis Way (Princess Dr)	Hunstanton and Heacham	Countywide Local Cycling and Walking Infrastructure Plan	Feasibility study and scheme to provide continuous cycling, walking and wheeling connectivity between existing shared-use provision at the Redgate Hill roundabout and the new proposed provision along Oasis Way and Bennett Close (HS PR1/09) including a raised table to enable priority cycling and pedestrian connectivity across Princess Drive.	Cycling, walking and wheeling	47m	Medium <5 years	Scheme feasibility Year 1 Detailed design Year 2
HH PR1/09	HH Route 1 (Red)	Primary	Oasis Way to Bishop's Road cycle link (via Bennet Cl, Windsor Dr)	Hunstanton and Heacham	Countywide Local Cycling and Walking Infrastructure Plan	Feasibility study and scheme to extend cycling and walking connectivity from Oasis Way and King's Lynn Road roundabout utilising quiet direct roads (Bennet Close, Windsor Drive, and Manor Road) and ending at the roundabout on Bishop's Road.	Cycling, walking and wheeling	934m	Medium <5 years	Scheme feasibility Year 1 Detailed design Year 2
HH PR1/10	HH Route 1 (Red)	Primary	South Beach Road (Bishop's Rd jct to Seagate Rd)	Hunstanton and Heacham	Countywide Local Cycling and Walking Infrastructure Plan	Segregated cycling and walking provision along South Beach Road connecting with provision along Bishop's Road (HS PR1/09).	Cycling, walking and wheeling	286m	Medium <5 years	Scheme feasibility Year 1 Detailed design Year 2
HH PR2/01	HH Route 2 (Blue)	Primary	Downs Road and Park Road	Hunstanton and Heacham	Countywide Local Cycling and Walking Infrastructure Plan	Feasibility study and scheme to provide continuous segregated cycling and walking provision along Downs Road and Park Road, connecting Smithdon High School on Downs Road with the network and upgrading existing shared-use provision along Park Road. The route connects with Route 3 (Blue) at the junction with Seagate and Beach Terrace Road. This route has a dependency on feasibility study and scheme HS PR1/04 which provides improved crossing facilities on King's Lynn Road.	Cycling, walking and wheeling	877m	Medium <5 years	Scheme feasibility Year 1 Detailed design Year 2
HH PR2/02	HH Route 2 (Blue)	Primary	Park Road and Sandringham Road crossing	Hunstanton and Heacham	Countywide Local Cycling and Walking Infrastructure Plan	Feasibility study and scheme to provide continuous segregated cycling and walking provision over the crossing of Downs Road and Sandringham Road.	Cycling, walking and wheeling	10m	Medium <5 years	Crossing Assessment Year 1 Detailed design Year 2
HH PR3/01	HH Route 3 (Green)	Primary	Lighthouse Lane and Cliff Parade	Hunstanton and Heacham	Countywide Local Cycling and Walking Infrastructure Plan	Feasibility study and schemes to enable cycling, walking and wheeling along Lighthouse Lane and Cliff Parade between Cromer Road and Seagate. Attention to traffic speeds, pavement widths and condition, lighting, wayfinding	Cycling, walking and wheeling	1650m	Medium <5 years	Scheme feasibility Year 1 Detailed design Year 2
HH PR3/02	HH Route 3 (Green)	Primary	Seagate Road and South Beach Road	Hunstanton and Heacham	Countywide Local Cycling and Walking Infrastructure Plan	Feasibility study and schemes to enable cycling, walking and wheeling along Seagate, Seagate Road and South Beach Road between Cliff Parade and the concrete ramp at the end of South Beach. Attention to traffic speeds, pavement widths and condition, wayfinding, lighting as well as providing priority at side road crossings.	Cycling, walking and wheeling	1270m	Medium <5 years	Scheme feasibility Year 1 Detailed design Year 2
HH PR3/03	HH Route 3 (Green)	Primary	North Beach Road	Hunstanton and Heacham	Countywide Local Cycling and Walking Infrastructure Plan	Feasibility study and scheme to enable safe cycling, walking and wheeling conditions a using a semi-bonded surface along North Beach Road. Starting at and including the concrete ramp at South Beach Road and ending at the roundabout junction with Jubilee Road.	Cycling, walking and wheeling	2000m	Medium <5 years	Scheme feasibility Year 1 Detailed design Year 2
HH PR3/04	HH Route 3 (Green)	Primary	Jubilee Road (roundabout to Stalthe Rd)	Hunstanton and Heacham	Countywide Local Cycling and Walking Infrastructure Plan	Feasibility study and schemes to enable cycling, walking and wheeling along Jubilee Road between and including the roundabout and Stalthe Road. Attention to traffic speeds, pavement widths and condition, lighting, wayfinding as well as providing priority at side road crossings.	Cycling, walking and wheeling	874m	Medium <5 years	Scheme feasibility Year 1 Detailed design Year 2
HH PR4/01	HH Route 4 (Yellow)	Primary	South Beach Road, Folgate Road and Lamsey Lane	Hunstanton and Heacham	Countywide Local Cycling and Walking Infrastructure Plan	Feasibility study and scheme to enable safe cycling, walking and wheeling connectivity along South Beach Road, Folgate Road and Lamsey Lane connecting with Ken Hill South Beach Carpark and Collingwood Close. This route can potentially enable a link with wider connectivity to the east.	Cycling, walking and wheeling	1800m	Medium <5 years	Scheme feasibility Year 1 Detailed design Year 2
HH PR5/01	HH Route 5 (Orange)	Primary	South Beach Road and Lodge Road junction	Hunstanton and Heacham	Countywide Local Cycling and Walking Infrastructure Plan	Feasibility study and schemes to enable cycling, walking and wheeling connectivity at the junction of South Beach Road and Lodge Road to enable connectivity along South Beach Road, Lodge Road and Folgate Road.	Cycling, walking and wheeling	20m	Medium <5 years	Junction Assessment Year 1 Detailed design Year 2

Extract from Hunstanton & Heacham Scheme List (Draft)

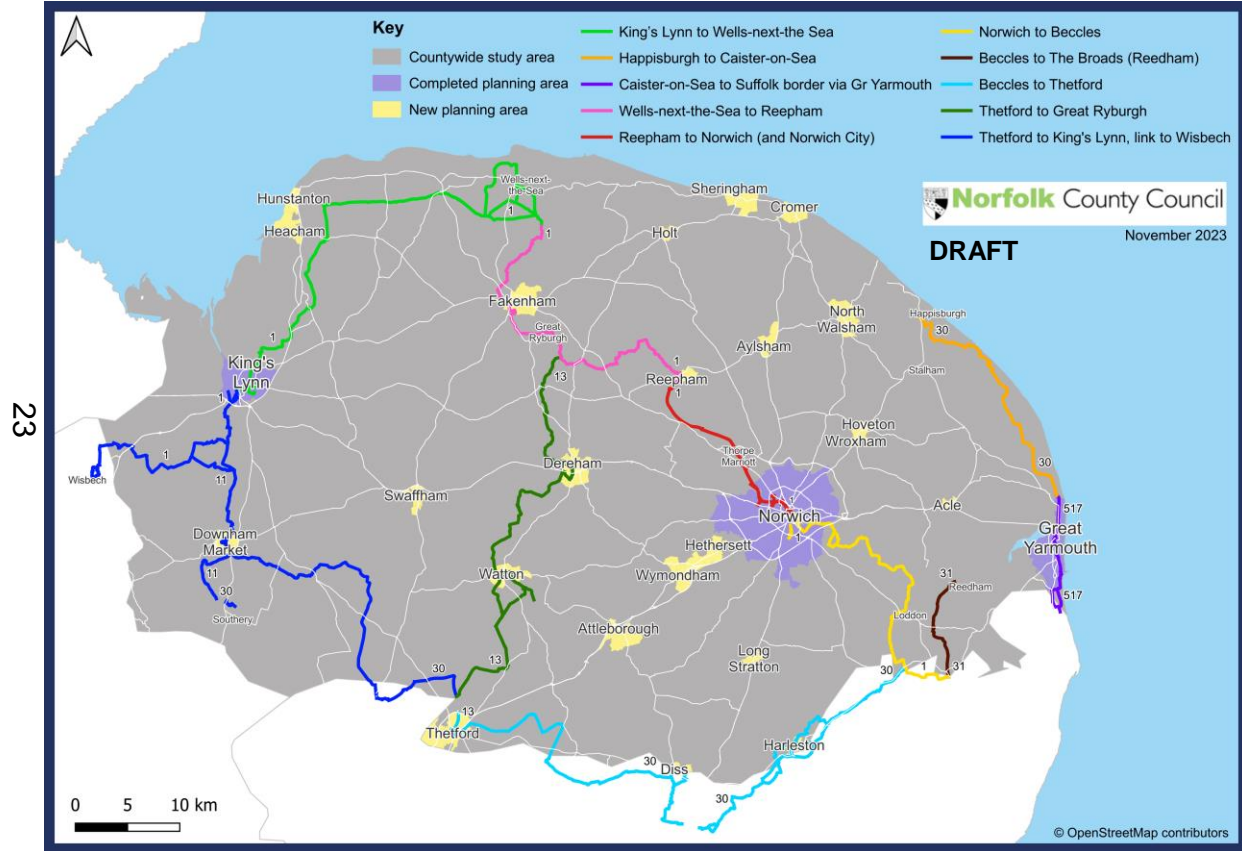
Trails Network Schemes



Map 4: Map of the Norfolk Trails Network

- Norfolk County Council manages approximately **2,400 miles of Public Rights of Way** consisting of footpaths, bridleways, restricted byways and byways open to all traffic.
- It provides access across the county, offering safe, direct and off-road alternatives to journeying via public transport or by private car.
- All Trails can be accessed by **walkers**, with some allowing **cycling and horse-riding**.
- Improvement schemes within the Countywide LCWIP range from **small-scale changes** to improve crossing points at busy junctions, wayfinding or surface condition improvements, to **larger schemes** which identify and deliver alternative safer routes or larger infrastructure improvements such as replacement boardwalks.

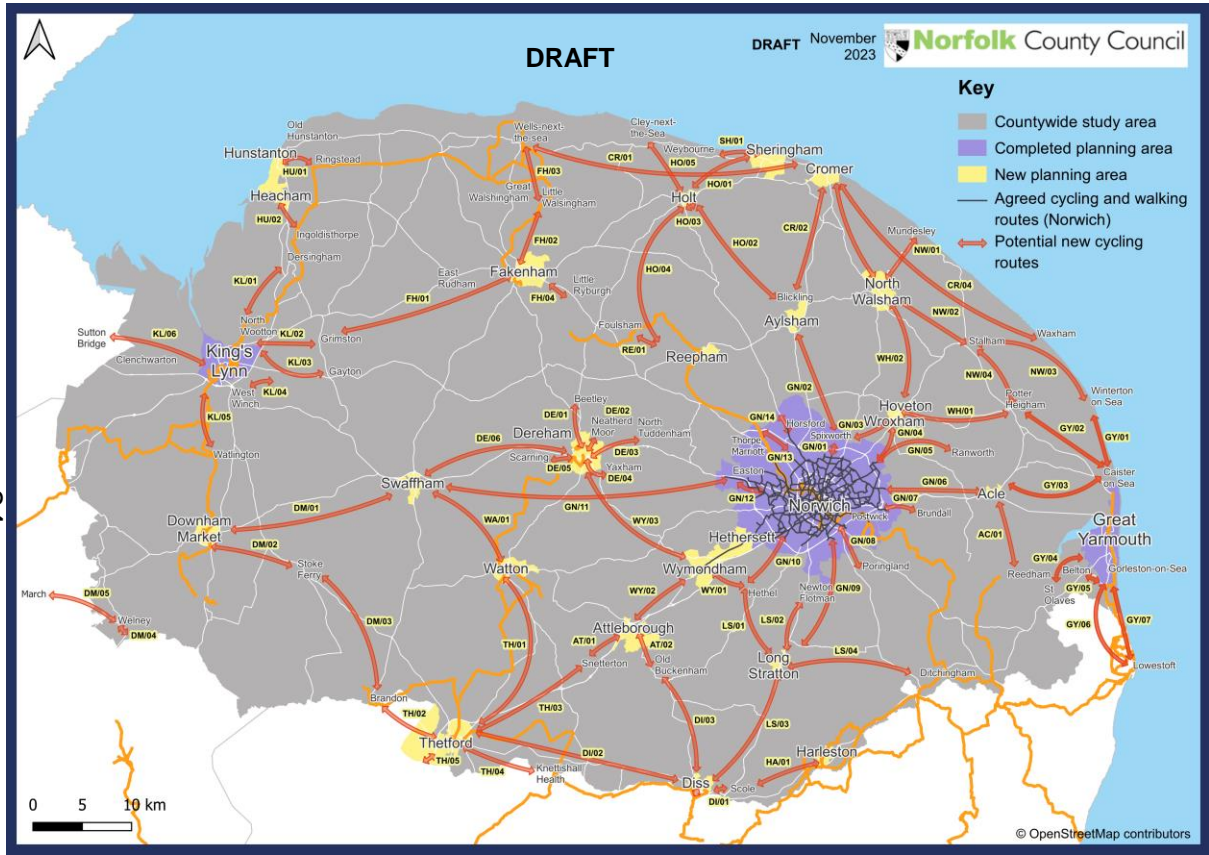
National Cycle Network in Norfolk



Map 5: Map of the current National Cycle Network in Norfolk

- The National Cycle Network (NCN) is a 23-year-old network of over **20,500km of signed cycling and walking routes** spanning the UK.
- It is used by people **walking** and **cycling**, as well as **wheelchair users, joggers** and **horse-riders**.
- In 2017, the network passed within one mile of half of the UK population and carried an estimated 786 million walking and cycling trips.
- Norfolk County Council are working with **Sustrans** as part of their network review to identify opportunities for improvements on the network.
- The LCWIP will include infrastructure schemes agreed with Sustrans which can be grouped into 5 categories: barrier removal schemes; traffic survey schemes; surface improvement schemes; crossing or junction improvement schemes and route realignment schemes.

Wider Connectivity Routes



- Walking, wheeling and cycling schemes have also been identified which will create or reinstate walking and cycling routes in the county.
- These new potential routes have been identified through a review of local plans, policies and network audits.
- The routes are unfunded longer-term projects which can be developed and delivered in partnership with District Councils and key stakeholders.

Map 6: Map of potential Wider Connectivity Routes in Norfolk.

Next steps

- Infrastructure and Development Select Committee: 13 March 2024
- Cabinet: 8 April 2024

25

REGENERATION AND DEVELOPMENT PANEL WORK PROGRAMME 2023/2024

DATE OF MEETING	TITLE	TYPE OF REPORT	LEAD OFFICER/ ATTENDEE	OBJECTIVES AND DESIRED OUTCOMES
22nd June 2023	Appointment of Vice Chair for the Municipal Year	Operational		
	Appointments to Task Groups and Informal Working Groups	Operational		
	Update on the Town Investment Plan and Town Deal Projects			
	Portfolio Holder Q&A Session			Questions to be submitted in advance of the meeting
25th July 2023	Portfolio Holder Q&A Session			Questions to be submitted in advance of the meeting
	Cabinet Report – West Winch Collaboration Agreement	Cabinet Report		To consider the report and make any appropriate recommendations to Cabinet
	Cabinet Report – Continuation of the Borough Council as part of the CNC Building Control Partnership	Cabinet Report	Stuart Ashworth	To consider the report and make any appropriate recommendations to Cabinet
	Baxter’s Plain Feasibility Study		Jemma Curtis	To receive information on the Feasibility Study and provide the Panel with the opportunity to comment on the scheme.
	Meeting Times	Operational		
12th September 2023	Portfolio Holder Q&A Session			Questions to be submitted in advance of the meeting
	Update on the Work of the Tourism Informal Working Group			

	Southgates Regeneration Area Update	Update	Jemma Curtis and officers from NCC	To receive an update.
	EXEMPT - Chairs Discussion Item – Transport Strategy and Long Term Plan – Panel Brainstorming Session	Panel Discussion		Request from the Chair
17th October 2023	Portfolio Holder Q&A Session			Questions to be submitted in advance of the meeting
	EXEMPT – Chairs Discussion Item – King’s Lynn Area Transport	Panel Discussion		Request from the Chair
28th November 2023	Update from the Carnegie Library	Panel Member Request	Jemma Curtis and officers from NCC	Request from Councillor Kemp
	EXEMPT - Cabinet Report – Finance Model Proposals for the loan facility for Council Companies	Cabinet Report	David Ousby	To consider the report and make any appropriate recommendations to Cabinet. JOINT PANEL ITEM. Members of CPP and E&C to be invited.
	EXEMPT - Cabinet Report – Proposed Business Plans for West Norfolk Property and West Norfolk Housing Company	Cabinet Report	David Ousby	To consider the report and make any appropriate recommendations to Cabinet. JOINT PANEL ITEM. Members of CPP and E&C to be invited.
	Cabinet Report – CIL Governance and Spending Document 2024 and Annual Infrastructure Funding List	Cabinet Report		To consider the report and make any appropriate recommendations to Cabinet.
10th January 2024	Baxters Plain Final Report		Jemma Curtis	
	Cabinet Report – Local Plan Gypsy and Traveller Preferred Sites Consultation Document	Cabinet Report	Stuart Ashworth	To consider the report and make any appropriate recommendations to

				Cabinet
30th January 2024 – Additional Meeting	Cabinet Report – Lynnsport One	Cabinet Report	David Ousby	To consider the report and make any appropriate recommendations to Cabinet
	EXEMPT - Cabinet Report – Acquisition of Homes	Cabinet Report	Duncan Hall	To consider the report and make any appropriate recommendations to Cabinet
20th February 2024	Economic Strategy for West Norfolk		Jemma Curtis and representatives from Metro Dynamics	
	Norfolk Wide Local Cycling Walking Infrastructure Plan		Representatives from Norfolk County Council	To receive an update.
	Chairs Discussion Item – Motor Homes/Caravan Park in King’s Lynn	Panel Discussion		As requested by the Chair
16th April 2024	Portfolio Holder Q&A Session			Questions to be submitted in advance of the meeting
	Car Parking Draft Strategy		Jemma Curtis	
	Cabinet Report - Guildhall RIBA Stage 3 Project Scope		Jemma Curtis	To consider the report and make any appropriate recommendations to Cabinet
	Economic Strategy for West Norfolk		Jemma Curtis	
	King’s Lynn Transport Strategy Consultation and Engagement		Jemma Curtis	

28

To be scheduled

- Heacham Beach Development opportunities
- Hunstanton Masterplan Update
- Southgates Masterplan – previous update provided in September 2023
- Local Plan Update
- Report of the Tourism Informal Working Group – to go early 2023 following final meeting of the Tourism Informal Working Group – to be scheduled once Action Plan has been drafted.
- Review of Task Groups and Informal Working Groups Terms of Reference:
 - Custom and Self Build Policy Development Task Group
 - Guildhall and Creative Hub Task Group
 - Tourism Informal Working Group
- West Norfolk Economic Development Strategy

FORWARD DECISIONS LIST

Date of meeting	Report title	Key or Non Key Decision	Decision Maker	Cabinet Member and Lead Officer	List of Background Papers	Public or Private Meeting
5 March 2024						
	Peer Review Challenge Action Plan	Non	Council	Leader Chief Executive		Public
	Data Protection Policy Review	Non	Council	Leader Monitoring Officer		Public
	KLACC – Area Committee Status	Non	Council	Leader Monitoring Officer		Public
	Corporate Strategy - Annual Plan 2024/25	Key	Council	Chief Executive Leader		Public
	Performance Targets setting 2023/24	Non	Cabinet	Chief Executive Leader		Public
30	Indemnity for Councillors and Officers on outside bodies	Non	Cabinet	Leader Monitoring Officer		Public
	Anti Money Laundering Policy Review	Non	Council	Finance Assistant Director – M Drewery		Public

Date of meeting	Report title	Key or Non Key Decision	Decision Maker	Cabinet Member and Lead Officer	List of Background Papers	Public or Private Meeting
11 April 2024 Special Meeting						
	Local Plan Gypsy and Traveller Preferred Sites	Key	Council	Development and Regeneration Asst Dir S Ashworth	Local Plan Task Group mins and Agendas	Public

Date of meeting	Report title	Key or Non Key	Decision Maker	Cabinet Member and Lead Officer	List of Background	Public or Private Meeting
------------------------	---------------------	-----------------------	-----------------------	--	---------------------------	----------------------------------

		Decision			Papers	
23 April 2024						
	Florence Fields – Tenure Mix	Non	Council	Deputy Leader Assistant Director – D Ousby		Part Public and part Private- Contains exempt Information under para 3 – information relating to the business affairs of any person (including the authority)
	Review of Outside Bodies	Non	Cabinet and Council	Leader		Public
	Article 4 Direction	Non	Cabinet	Regeneration and Development Assistant Director – S Ashworth		Public
	CIL applications referred to Cabinet	Non	Cabinet	Development and Regeneration Asst Dir – S Ashworth		Public
	Redundancy Payments Scheme	Non	Council	Leader Exec Dir – D Gates		Public

Date of meeting	Report title	Key or Non Key Decision	Decision Maker	Cabinet Member and Lead Officer	List of Background Papers	Public or Private Meeting
11 June 2024						
	St George's Guildhall RIBA Stage 3 and project scope	Key	Cabinet	Regeneration & Development Asst Dir		Public
	Empty Homes Strategy Review	Key	Council	People and Communities Asst Dir M Whitmore		Public

	King's Lynn Town Football Club	Non	Cabinet	Property Asst Dir – M Henry		Private- Contains exempt Information under para 3 – information relating to the business affairs of any person (including the authority)
--	--------------------------------	-----	---------	--------------------------------	--	--

Items to be scheduled

	Notice of Motion 7-21 – Councillor Kemp – Equalities	Non	Council	People & Communities Asst Dir B Box		Public
	Procurement Strategy	Non	Cabinet	Finance Asst Dir – D Ousby		Public
	Review of Planning Scheme of Delegation (summer 23)	Non	Council	Development and Regeneration Asst Dir – S Ashworth		Public
32	Custom and Self Build Site – Stoke Ferry	Non	Cabinet	Regeneration and Development Assistant Director - D Hall		Public
	Southend Road Hunstanton	Key	Cabinet	Regeneration & Development Asst Dir – D Ousby		Public
	Overnight Campervan parking in Hunstanton	Non	Cabinet	Leader Asst Director – M Chisholm		Public
	Pay Award 2024	Key	Cabinet	Leader		Public